

PAINTED NO. 2

MDS350-AGB/DBL

Tried-and-true, Painted No. 2 has an effortless look that is the result of careful consideration. A relaxed form with timeless style, it is now available in even more beautiful finish options that give it a renewed sense of freshness. Its classic heritage feel is reflected across all formats, including a sconce and pendant in three sizes.

FINISHES

AGED BRASS w/ DARKEST BLUE

DIMENSIONS / SPECS

Height: 11.75"
Width/Diameter: 9.5"
Canopy/Backplate: 5"
Product Weight: 2lb
Extension: 10.75"
Top to Center: 2.5"
Canopy/Backplate Shape: Round
Sloped Ceiling Compatible: No
Living Finish: No
Uplight Only: Yes

Shade 1: Steel
Shade 1 Top Width: 3.5"
Shade 1 Bottom L/W: 0" / 9.5"
Shade 1 Height: 4.5"

ELECTRICAL



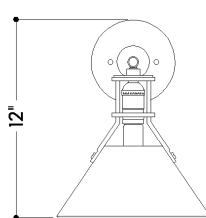
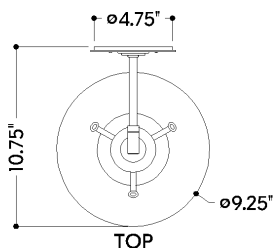
Bulb 1

Bulb Included: No
Socket: E26 Medium Base
Bulb Type: T10-5.5
Max Wattage: 8
Bulb Quantity: 1
Wire Length: 7"
Gem Box Required (2"x3"): No
Dark Sky: No

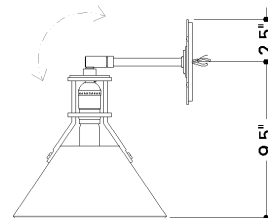


SHIPPING

Carton 1: 15" x 15" x 13"
Carton 1 Weight: 4lb
Shipping Method: Ground
Country of Origin: VN



FRONT



SIDE