

# METAL NO. 2

MDS950-PN

Exposed hardware adds a touch of industrial chic to a timeless cone shade silhouette. Go for a crisp monochromatic look with the all-over Polished Nickel or Aged Brass finish or pair the Aged Brass hardware with a Distressed Bronze shade. The portable sconce features an adjustable arm and braided cord. Part of our Mark D. Sikes collection.

## FINISHES

### POLISHED NICKEL

## DIMENSIONS / SPECS

Height: 12"  
Width/Diameter: 9.5"  
Canopy/Backplate: 5.25"  
Product Weight: 3.08lb  
Extension: 11"  
Top to Center: 2.5"  
Canopy/Backplate Shape: Round  
Sloped Ceiling Compatible: No  
Living Finish: No  
Uplight Only: Yes  
Min Extension: 11"  
Max Extension: 16.75"

Shade 1: **Steel**  
Shade 1 Finish: **Polished Nickel**  
Shade 1 Top Width: 3.75"  
Shade 1 Bottom L/W: 0" / 9.5"  
Shade 1 Height: 4.5"

## ELECTRICAL

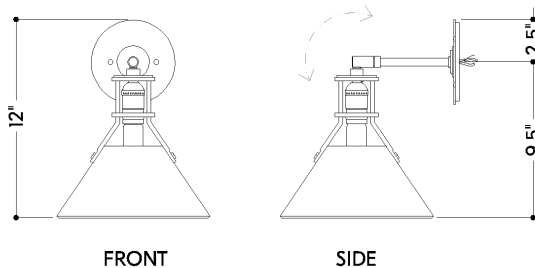
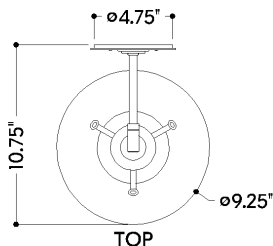


### Bulb 1

Bulb Included: No  
Socket: E26 Medium Base  
Bulb Type: T10-5.5  
Max Wattage: 8  
Bulb Quantity: 1  
Wire Length: 7"  
Cord Type: B & W TEFLON W/ COPPER  
GROUND WIRE  
Gem Box Required (2"x3"): No  
Dark Sky: No

## SHIPPING

Carton 1: 15" x 15" x 13"  
Carton 1 Weight: 5lb  
Shipping Method: Ground  
Country of Origin: VN



HUDSON VALLEY  
LIGHTING GROUP