

# ROSALBA

376-02-VB

Alabaster forms are configured neatly into a central framework of warm Vintage Brass in this puzzle-like sconce. The matte quality of the natural stone contrasts beautifully with the shiny brass, blending organicism with luxury. Playful and unexpected, this fixture would make an enigmatic focal point in hallways and bathrooms.

\*Due to the one-of-a-kind nature of the medium, exact colors and patterns may vary slightly from the image shown.

## FINISHES

### VINTAGE BRASS

Coastal Suitable Finish (EPM): No

## DIMENSIONS

Height: 26"

Width/Diameter: 6.5"

Canopy/Backplate: 5.25"

Product Weight: 9.88lb

Extension: 2.25"

Canopy/Backplate Shape: Round

Sloped Ceiling Compatible: No

Living Finish: Yes

Uplight Only: No

## Shade

Shade 1: Alabaster

Shade 1 Top Length: 11.75"

Shade 1 Top Width: 2.25"

Shade 1 Height: 2.25"

## ELECTRICAL



### Bulb 1

Bulb Included: N/A

Socket: Integrated LED

Max Wattage: 18

Bulb Quantity: 2

Bulb Included: Yes

Wire Length: 7"

Dimmer Type: ELV, TRIAC

Gem Box Required (2"x3"): No

Dark Sky: No

CRI: 90

Color Temp.: 2700k

Lumens: 800

Title 24: No

Field Serviceable: Yes

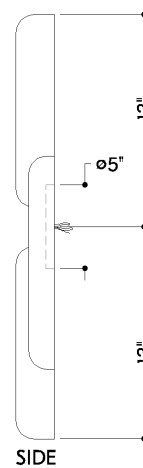
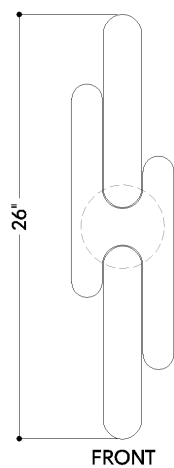
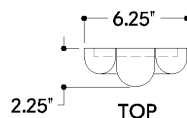
## SHIPPING

Carton 1: 31" x 10" x 6"

Carton 1 Weight: 13lb

Shipping Method: Ground

Country of Origin: VN



HUDSON VALLEY  
LIGHTING GROUP

| [hvlgroup.com](http://hvlgroup.com) | 1.800.814.3993

REVISED 3.11.2022