

RIVIERE

465-52-VGL

Inspired by Noz Nozawa's stackable rings, Riviere features a classic silhouette accented by striking details and powered by energy-efficient LED. Organic, pod-shaped heads encase ice onyx discs within a bezel setting reminiscent of the way a gemstone is set into a ring. Finished in Vintage Gold Leaf, the distinctive chain suspending the chandelier adds another jewelry-like element to the design. Riviere is available as an 8 or 10-light chandelier and a single-light sconce. Part of our Noz Nozawa collection.

*Due to the one-of-a-kind nature of the medium, exact colors and patterns may vary slightly from the image shown.

FINISHES

VINTAGE GOLD LEAF

DIMENSIONS

Height: 6"
Width/Diameter: 51.5"
Minimum Height: 22"
Maximum Height: 73.5"
Canopy/Backplate: 7"
Hanging Type: 72" Chain
Product Weight: 26.4lb
Canopy/Backplate Shape: Round
Sloped Ceiling Compatible: No
Living Finish: No
Uplight Only: No

Shade

Shade 1: Natural Stone
Shade 1 Finish: Ice Onyx
Shade 1 Top Width: 5"
Shade 1 Height: 1.25"

ELECTRICAL

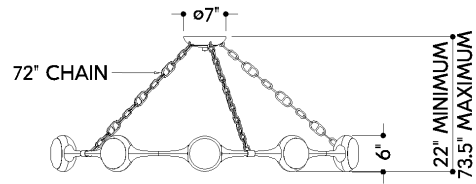
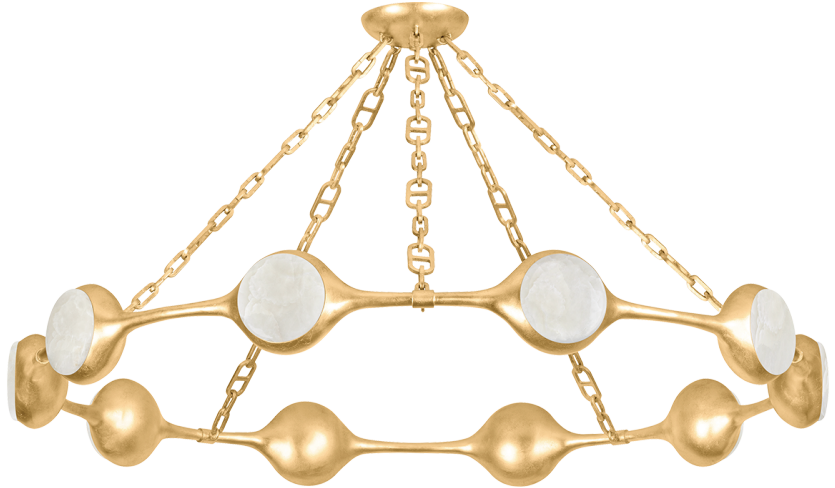


Bulb 1

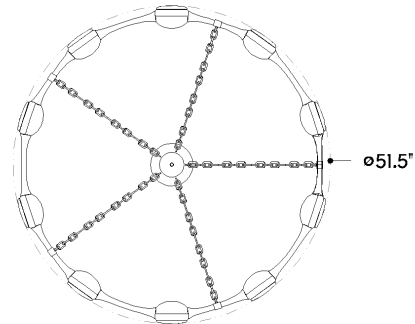
Bulb Included: N/A
Socket: Integrated LED
Max Wattage: 103
Bulb Quantity: 10
Wire Length: 144"
Cord Type: SPT-1 SILVER W/ TINNED GROUND WIRE
Dimmer Type: ELV, TRIAC
Gem Box Required (2"x3"): No
Dark Sky: No
CRI: 90
Color Temp.: 2700k
Lumens: 1650
Title 24: No
Field Serviceable: No

SHIPPING

Carton 1: 56" x 56" x 11"
Carton 1 Weight: 63lb
Shipping Method: Truck Only
Country of Origin: PH



FRONT



BOTTOM