

DEPTFORD

7218-DB

Aiming for a modernist style with LED lamping, Deptford's streamlined geometry and high functionality make it perfect for task lighting. The slim silhouette is accented by knurling details along the length of the shade, adding texture and visual interest. Available as a table lamp, floor lamp, and picture light in two sizes, Deptford is designed to layer and adapt to your space.

FINISHES

DISTRESSED BRONZE

Coastal Suitable Finish (EPM): No

DIMENSIONS

Height: 3"

Width/Diameter: 18"

Canopy/Backplate: 5"

Hanging Type: 1-3" / 1-6" / 1-12" / 2-18" Stems

Product Weight: 1.65lb

Extension: 7.5"

Top to Center: 1.5"

Canopy/Backplate Shape: Rectangle

Sloped Ceiling Compatible: No

Living Finish: No

Uplight Only: No

Shade

Shade 1: Acrylic

Shade 1 Finish: White

Shade 1 Top Length: 8"

Shade 1 Top Width: 0.75"

ELECTRICAL



Bulb 1

Bulb Included: N/A

Socket: Integrated LED

Max Wattage: 12

Bulb Quantity: 2

Bulb Included: Yes

Wire Length: 7"

Cord Type: B & W TEFLON W/ GROUND WIRE

Dimmer Type: ELV, TRIAC

Gem Box Required (2"x3"): Yes

Dark Sky: No

CRI: 90

Color Temp.: 2700k

Lumens: 700

Title 24: No

Field Serviceable: No

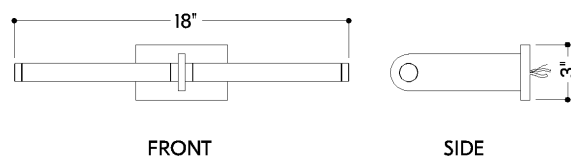
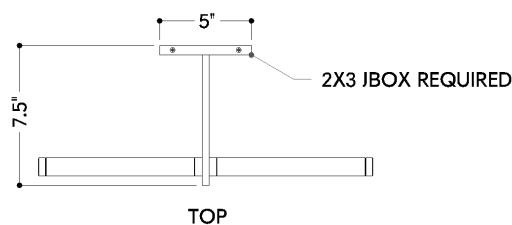
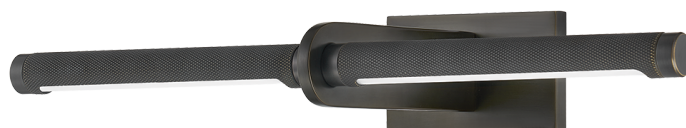
SHIPPING

Carton 1: 24" x 13" x 8"

Carton 1 Weight: 2lb

Shipping Method: Ground

Country of Origin: VN



HUDSON VALLEY
LIGHTING GROUP

| hvlgroup.com | 1.800.814.3993

REVISED 3.11.2022