

# ANDROS

9316-AGB

Sharp angles, sinuous curves, and sleek metalwork come together in the architectural Andros sconce. Suspended from an L-shaped backplate, the modern conical silhouette has a bell-like appearance. The opal matte glass shade is bias-cut on the end to create an elliptical opening, projecting light outwards into the room. Choose from either an Aged Brass or Old Bronze backplate for a more classic or modern look.

## FINISHES

### AGED BRASS

Coastal Suitable Finish (EPM): No

## DIMENSIONS

Height: 16.25"

Width/Diameter: 5"

Canopy/Backplate: 5"

Product Weight: 6.6lb

Extension: 6.25"

Top to Center: 13.25"

Canopy/Backplate Shape: Rectangle

Sloped Ceiling Compatible: No

Living Finish: No

Uplight Only: No

## Shade

Shade 1: Glass

Shade 1 Finish: Opal Matte

Shade 1 Top Width: 2.25"

Shade 1 Bottom L/W: 0" / 5"

Shade 1 Height: 11.75"

## ELECTRICAL



### Bulb 1

Bulb Included: No

Socket: E26 Medium Base

Bulb Type: A15

Max Wattage: 15

Bulb Quantity: 1

Wire Length: 7"

Cord Type: B & W TEFLON W/ GROUND WIRE

Gem Box Required (2"x3"): No

Dark Sky: No

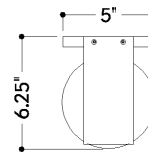
## SHIPPING

Carton 1: 24" x 12" x 9"

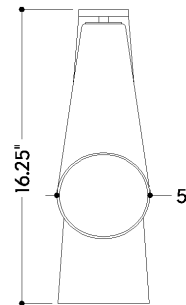
Carton 1 Weight: 14lb

Shipping Method: Ground

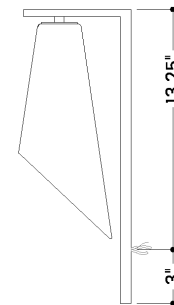
Country of Origin: VN



TOP



FRONT



SIDE

HUDSON VALLEY  
LIGHTING GROUP

| [hvlgroup.com](http://hvlgroup.com) | 1.800.814.3993