

# ANDROS

9316-AGB

Sharp angles, sinuous curves, and sleek metalwork come together in the architectural Andros sconce. Suspended from an L-shaped backplate, the modern conical silhouette has a bell-like appearance. The opal matte glass shade is bias-cut on the end to create an elliptical opening, projecting light outwards into the room. Choose from either an Aged Brass or Old Bronze backplate for a more classic or modern look.

## FINISHES

AGED BRASS

## DIMENSIONS

Height: 16.25"  
Width/Diameter: 5"  
Canopy/Backplate: 5"  
Product Weight: 6.6lb  
Extension: 6.25"  
Top to Center: 13.25"  
Canopy/Backplate Shape: Rectangle  
Sloped Ceiling Compatible: No  
Living Finish: No  
Uplight Only: No

## Shade

Shade 1: Glass  
Shade 1 Finish: Opal Matte  
Shade 1 Top Width: 2.25"  
Shade 1 Bottom L/W: 0" / 5"  
Shade 1 Height: 11.75"

## ELECTRICAL

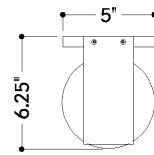


## Bulb 1

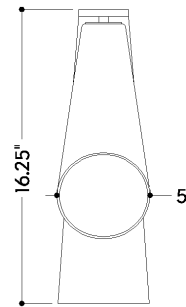
Bulb Included: No  
Socket: E26 Medium Base  
Bulb Type: A15  
Max Wattage: 15  
Bulb Quantity: 1  
Wire Length: 7"  
Cord Type: B & W TEFLON W/ GROUND WIRE  
Gem Box Required (2"x3"): No  
Dark Sky: No

## SHIPPING

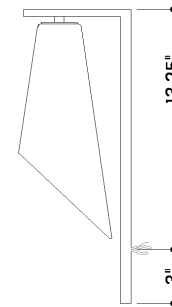
Carton 1: 24" x 12" x 9"  
Carton 1 Weight: 14lb  
Shipping Method: Ground  
Country of Origin: VN



TOP



FRONT



SIDE