

ECO-DOWNLIGHT

ECO™ Essentials by CSL is a system of recessed downlights that offer a versatile LED solution for general, task, or accent lighting. ECO™ Recessed Downlights provide quality light, with minimal glare and maximum control, offering up to 1100 delivered lumens from a 3" aperture. CSL uses the highest quality 90+ CRI, 2-Step SDCM LED chips powered by a high-performance TRIAC, ELV, 120V/277V dimming driver.

FINISHES

MATTE BLACK

DIMENSIONS

Height: 2.5"
Width/Diameter: 8.63"
Length: 12.63"
Hanging Type: Recessed
Product Weight: 4.55lb
Sloped Ceiling Compatible: No
Living Finish: No
Uplight Only: No

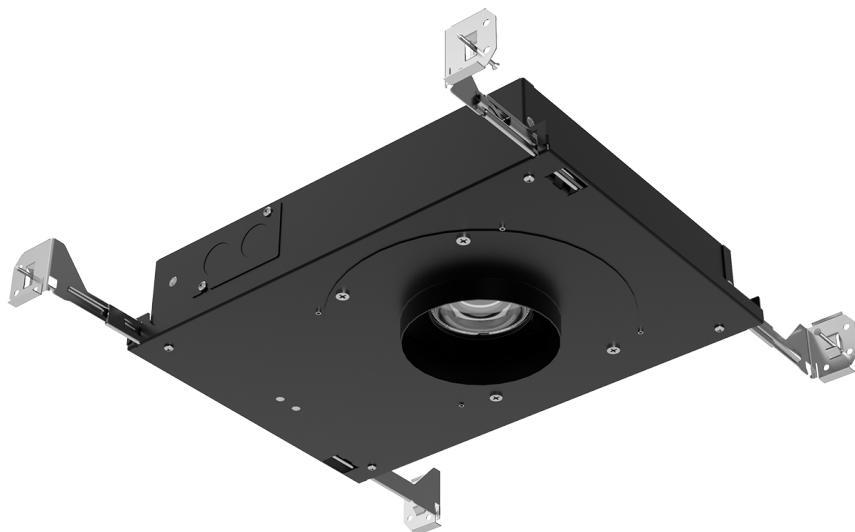
Shade

ELECTRICAL



Bulb 1

Bulb Included: N/A
Socket: Integrated LED
Max Wattage: 21
Bulb Quantity: 1
Dimmer Type: ELV, TRIAC, 0-10 VOLT
Gem Box Required (2"x3"): No
Dark Sky: No
CRI: 98
Color Temp.: 3000k
Lumens: 1220
Title 24: Yes
Field Serviceable: Yes



SHIPPING

Carton 1: 16" x 11" x 4"
Carton 1 Weight: 6lb
Shipping Method: Ground
Country of Origin: HK