

JOJO

H885101-AGB/SWH

Influenced by midcentury design, Jojo features a dome-shaped shade with decorative perforations that allow light to escape. Both the pendant and scone come in a Soft White finish while the lamp is available in a moody green as an eye-catching accent piece. The pendant features 2 lights within its bowl, optimizing illumination. All variations are elegantly accented in Aged Brass. Part of our Zoe Feldman collection.

FINISHES

AGED BRASS w/ SOFT WHITE

Coastal Suitable Finish (EPM): No

DIMENSIONS

Height: 18.75"

Width/Diameter: 7.75"

Canopy/Backplate: 4.75"

Product Weight: 10.43lb

Extension: 8.25"

Top to Center: 10.75"

Canopy/Backplate Shape: Round

Sloped Ceiling Compatible: No

Living Finish: No

Uplight Only: No

Shade

Shade 1: Metal

Shade 1 Finish: Soft White

Shade 1 Top Width: 7.75"

Shade 1 Height: 4.25"

ELECTRICAL



Bulb 1

Bulb Included: No

Socket: E26 Medium Base

Bulb Type: A15

Max Wattage: 15

Bulb Quantity: 1

Wire Length: 7"

Gem Box Required (2"x3"): No

Dark Sky: No

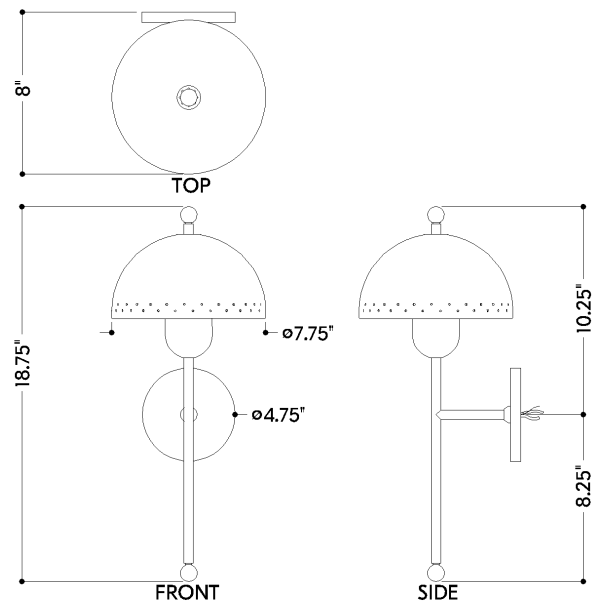
SHIPPING

Carton 1: 11" x 5" x 3"

Carton 1 Weight: 22lb

Shipping Method: Ground

Country of Origin: VN



HUDSON VALLEY
LIGHTING GROUP

| hvlgroup.com | 1.800.814.3993