

# TERRA

H913101-AGB/CAI

Terra owes its distinguished beauty to organic-inspired design elements. A softly rectangular ceramic reflector gracefully curls around a glass shade, like a shell presenting a pearl. The silhouette is both modern and classical, complemented by an antique ivory ceramic finish. Bring artistry and soft lighting to any wall with this serene accent piece.

## FINISHES

### AGED BRASS w/ CERAMIC ANTIQUE IVORY

Coastal Suitable Finish (EPM): No

## DIMENSIONS

Height: 16.5"

Width/Diameter: 7.75"

Canopy/Backplate: 4"

Product Weight: 4.62lb

Extension: 6"

Top to Center: 8.25"

Canopy/Backplate Shape: Rectangle

Sloped Ceiling Compatible: No

Living Finish: No

Uplight Only: No

## Shade

Shade 1: Glass

Shade 1 Finish: Opal Shiny

Shade 1 Top Width: 7.75"

Shade 1 Height: 4.75"

## ELECTRICAL



### Bulb 1

Bulb Included: No

Socket: E26 Medium Base

Bulb Type: A15

Max Wattage: 8

Bulb Quantity: 1

Bulb Included: No

Wire Length: 7"

Cord Type: B & W TEFLON W/ GROUND WIRE

Gem Box Required (2"x3"): No

Dark Sky: No

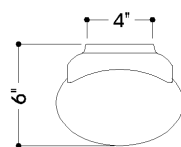
## SHIPPING

Carton 1: 21" x 12" x 11"

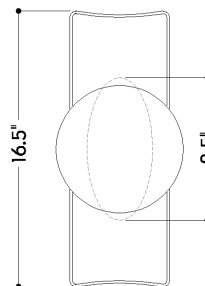
Carton 1 Weight: 9lb

Shipping Method: Ground

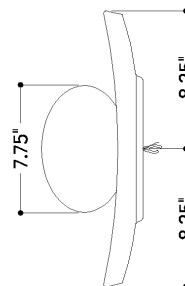
Country of Origin: VN



TOP



FRONT



SIDE

HUDSON VALLEY  
LIGHTING GROUP

| [hvlgroup.com](http://hvlgroup.com) | 1.800.814.3993

REVISED 3.11.2022