

# SANG

HL682401-OB

Sang is jewelry-inspired lighting at its finest. Ornamental spheres give the geometric, clean silhouette a decorative flourish. Finished in Aged Brass or Old Bronze with a white linen shade, Sang recalls a bold drop-earring. Available as a pendant, plug-in wall sconce, or floor lamp, there's a Sang to accessorize every room. Part of our Dabito x Mitzi Tastemakers collection.

## FINISHES

### OLD BRONZE

Coastal Suitable Finish (EPM): No

## DIMENSIONS

Height: 64"

Width/Diameter: 15"

Length: 23"

Canopy/Backplate: 11"

Product Weight: 26.4lb

Canopy/Backplate Shape: Round

Sloped Ceiling Compatible: No

Living Finish: No

Uplight Only: Yes

## Shade

Shade 1: Linen

Shade 1 Finish: White

Shade 1 Top Width: 3.5"

Shade 1 Bottom L/W: 0" / 15"

Shade 1 Height: 7"

## ELECTRICAL



### Bulb 1

Bulb Included: No

Socket: E26 Medium Base

Bulb Type: G40

Max Wattage: 25

Bulb Quantity: 1

Bulb Included: No

Wire Length: 120"

Cord Type: SPT-2 BLACK FABRIC

Switch Type: ON/OFF STOMP SWITCH

Gem Box Required (2"x3"): No

Dark Sky: No

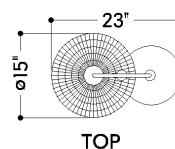
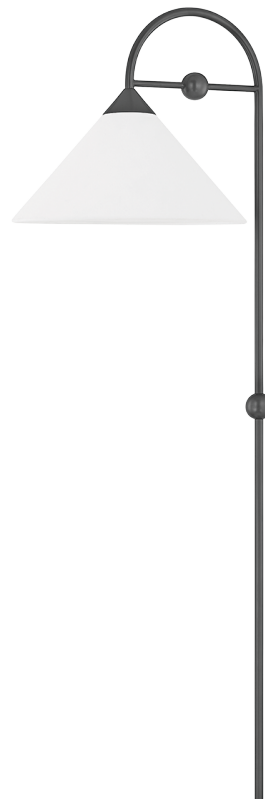
## SHIPPING

Carton 1: 42" x 21" x 18"

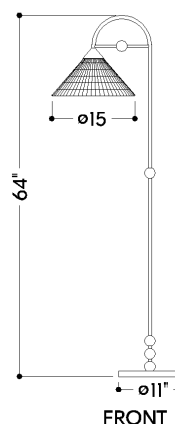
Carton 1 Weight: 42lb

Shipping Method: Ground

Country of Origin: VN



TOP



FRONT

HUDSON VALLEY  
LIGHTING GROUP

| [hvlgroup.com](http://hvlgroup.com) | 1.800.814.3993

REVISED 3.11.2022