

ECO-DOWNLIGHT

ECO™ Essentials by CSL is a system of recessed downlights that offer a versatile LED solution for general, task, or accent lighting. ECO™ Recessed Downlights provide quality light, with minimal glare and maximum control, offering up to 1100 delivered lumens from a 3" aperture. CSL uses the highest quality 90+ CRI, 2-Step SDCM LED chips powered by a high-performance TRIAC, ELV, 120V/277V dimming driver.

FINISHES

MATTE BLACK

Coastal Suitable Finish (EPM): No

DIMENSIONS

Height: 2.5"

Width/Diameter: 8.63"

Length: 12.63"

Hanging Type: Recessed

Product Weight: 4.55lb

Sloped Ceiling Compatible: No

Living Finish: No

Uplight Only: No

Shade

ELECTRICAL



Bulb 1

Bulb Included: N/A

Socket: Integrated LED

Max Wattage: 12

Bulb Quantity: 1

Dimmer Type: ELV, TRIAC, 0-10 VOLT

Gem Box Required (2"x3"):

No

Dark Sky: No

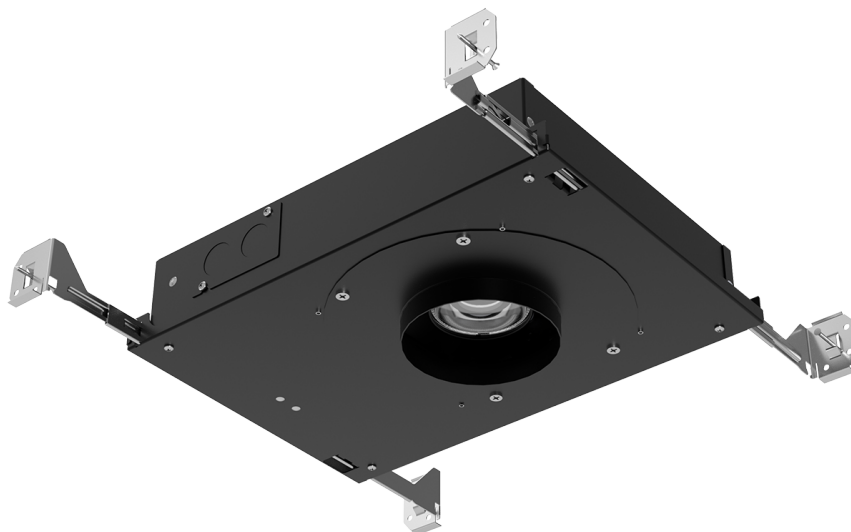
CRI: 90

Color Temp.: 2700k

Lumens: 1220

Title 24: Yes

Field Serviceable: Yes



SHIPPING

Carton 1: 16" x 11" x 4"

Carton 1 Weight: 6lb

Shipping Method: Ground

Country of Origin: HK